



---

# BRUNEL SCAFFOLDING LTD

---

Risk & Method  
Statement

---

Midas - Tidworth Primary School,  
Tidworth

---



## METHOD STATEMENT

SITE: Tidworth Primary School, Tidworth, Wiltshire  
Contractor: Midas Construction  
Construction Method: Steel Frame (Progressive Scaffold).  
Anticipated Start Date: March 2014 (TBC)  
Revisions: 18<sup>th</sup> March 2014

Method statement for the erection, dismantle and final clearing of scaffold materials to form independent tube and fitting access scaffold to the external building, loading bays, ladder access points and birdcages as per the detailed quotation 18501.

Please find the customers responsibilities below:

### A. General Guidelines

1. All Brunel operatives to have a tool box talk on the Brunel risk assessment & method statement before commencing works on site.
2. All Brunel operatives to attend a Midas Construction site induction for this contract before commencing works on site.
3. All proof of training and certification of plant and equipment are to be entered into the Midas register during induction and updated weekly.
4. Use of mobile phones in designated areas only.
5. Use designated pedestrian routes on site to access work areas.
6. Delivery restrictions – NA
7. Site working hours are 8am until 5pm
8. If access is required to the bed of the lorry and single handrail around the lorry needs to be erected.
9. Smoking is only allowed in designated areas, these areas will be pointed out in the site induction.
10. The scaffold is to be erected in a progressive tube and fitting system and will conform to the relevant requirements (TG20:13 & SG4:10).
11. **Ensure a "scaffold incomplete" sign is clearly displayed and handrail in place to prevent use of any section of incomplete scaffold.**
12. All operatives to wear all necessary PPE (hard hat, safety boots, hi-viz vests/t-shirts, gloves, eye protection and safety harnesses).
13. All operatives to visually inspect/check all PPE and tools before starting work to ensure all items are fit for use.
14. Harness & lanyards will have a 3 month recorded examination undertaken by a competent person. All harness & lanyard inspections to be recorded in the Brunel Scaffolding register, no harness shall be older than 36 months with all identification numbers clearly visible.
15. All operatives to hold a current CSCS card and CISRS card.
16. The charge hand/supervisor for the site will have been trained & hold the relevant cards (SSSTS Card).
17. First aid provision by Midas Construction.
18. Only tested power tools and leads are to be used.
19. Complete a visual check of all scaffold materials prior to use to ensure they are fit for use; any faulty items are to be segregated and returned to the yard for repair.
20. The work will be carried out by competent operatives using, wherever practical, the appropriate available to ensure that all work is undertaken in a safe and responsible manner and in accordance with Brunel Scaffoldings H&S Policy and SG4:10 'The use of fall arrest equipment whilst erecting, altering and dismantling scaffold'
21. All scaffolds shall be to the codes of practice and current regulations in particular the work at height regulations.

22. All scaffold ties to be clearly identified and marked on the scaffold to prevent accidental removal.
23. On completion of each section of scaffold, the scaffold will be inspected by a competent person. A handover certificate will be issued to Midas construction to confirm that the scaffold is safe for use and erected as per all current regulations.
24. All loading bays to be erected as per the standard design drawing, with loading bay gates 'swing over type', brick guards and toe boards. Loading bays will have clear signage that provides the user with adequate information regarding the SWL of the loading bay (provided by Midas construction).
25. All basic birdcages to be erected as per the standard design (TG20:13).
26. Operatives must ensure that all access and egress routes are kept clear, that materials & equipment are stored in designated areas and that the working area is left clean and tidy before leaving site at the end of the day.
27. If any scaffold is required that is not included in this document, then a revised RAM will be required.
28. Hot works – Scaffolders will at times (if required) be using a disc cutter or rip saw to cut scaffold tube or boards. This is to be carried out in a designated safe area away from any hazardous materials, fire extinguisher to be kept with the disc cutter when in use at all times. – All Brunel operatives fully trained for using the disc cutter and rip saws – Please see attached certificates.
29. Brunel Site Supervisor to attend morning briefing when required with Midas site manager and other trades.
30. Scaffold to be designed and erected as per the Midas scaffold schedule, scaffold heights will vary with the height of the building, no standards to protrude up into the working platform (causing trip hazards). Standards to be cut as flush as possible with the deck or will be over 1m with end caps on the tubes. The same will apply to any crash decks/birdcages that are erected within the building.
31. Scaffold design to be entered into the Midas on site temporary works register.
32. No asbestos on site – therefore no training required for Asbestos training.
33. All waste produced by Brunel Scaffolding (Boards, tube, fittings) will be removed by Brunel at the end of the working day.

## **B. Erection Procedures – Traditional Scaffold**

1. Prior to commencing any works a complete visual health and safety check of the area will be conducted and any issues will be reported to Midas construction before work commences.
2. Ensure the work area is cordoned off with appropriate barriers or Heras fencing.
3. Tubular materials erected off base plates and sole boards resting upon made up/ compacted ground and fixed by means of fittings to an independent scaffold erected in accordance with BS EN12811-1/ TG20:08.
4. Scaffold to be tied in accordance with BS EN12811-1/ TG20:08, scaffold to be tied to the steelwork and/or into the window reveals using the 'through tie method'. All tie positions to be agreed by Midas construction beforehand.
5. Progressive lifts to be raised as brickwork proceeds in 1.5m lifts, with full double handrail, brickguards and toe boards to each lift as it is raised. Ladder access points will be erected within the scaffold using ladder gates and handrail as edge protection.

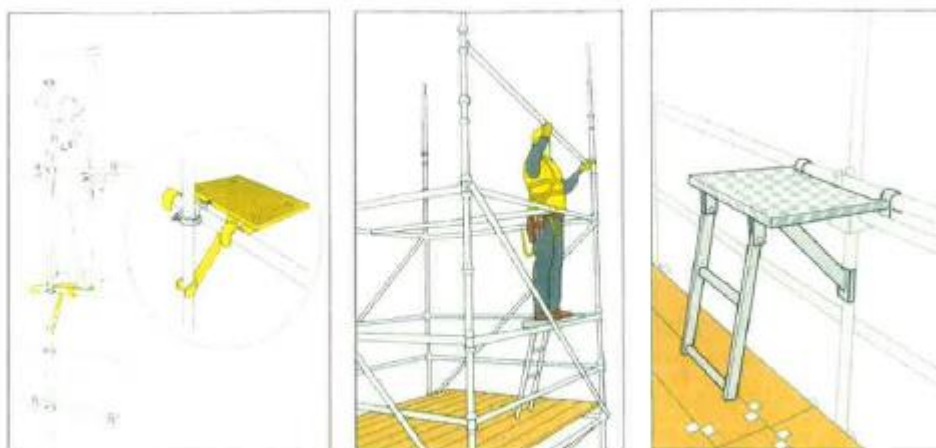


Figure 39 Examples of Step-up systems in use

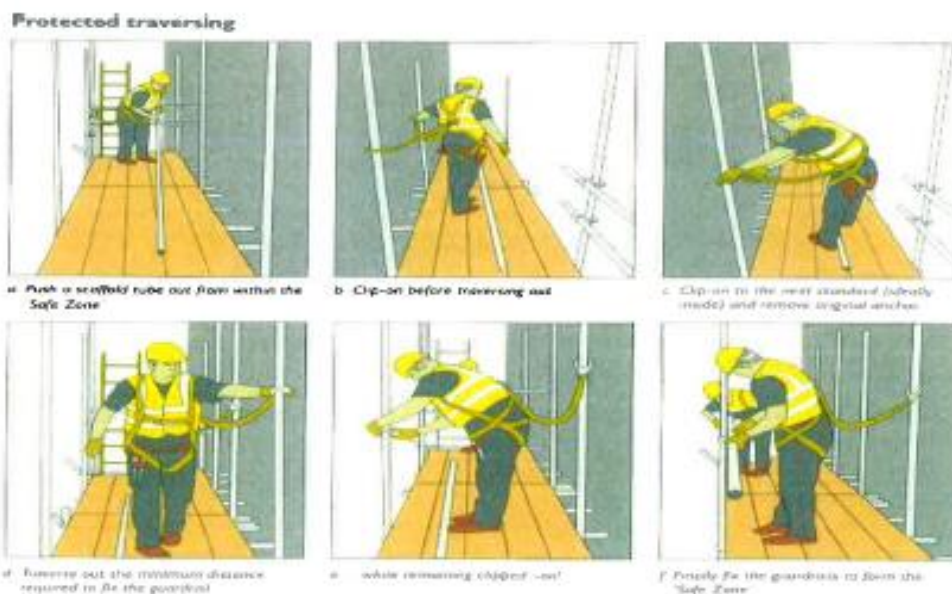
6. On site crane to be utilized wherever possible to minimize the risks of manual handling, especially to the far side of the site where we cannot access the building in a vehicle due to access restrictions.

7. Scaffold to be dismantled in the reverse procedure to the above.

8. All scaffold to be erected as per SG4:10 –See the diagram illustrating the use of the scaff' step below (**fig 39**).

There may be instances when it is not possible to complete the handrail from below, in these instances the scaffolders must, if possible create a 'safe zone' with a minimum: fully boarded and correctly supported platform, single guardrail (950mm above the platform) where there is risk of a fall. It is to be recognized that the methods of achieving the safe zone do not completely eliminate the risk for all scaffolding operations; therefore personal fall protection equipment will still be required. When scaffolders approach to within 1m of an unprotected area they are considered at risk and must clip on to a suitable anchor point.

**IT IS NOT PERMITTED FOR SCAFFOLDER(S) TO TRAVERSE ALONG A PLATFORM WITHOUT ANY FORM OF FALL PROTECTION.**



The use of a double lanyard may be used to allow protected traversing.

**C. Raising and Lowering Materials**

1. All equipment will be delivered, transported and collected in strapped bundles, pallets or bins.
2. Use of the site fork lift and crane is with the agreement of Midas Construction – any materials that are to be lifted by the crane must be done so using the LOLER certificated stillage's and all materials must be strapped.
3. Materials can be passed up/down the scaffold hand to hand.

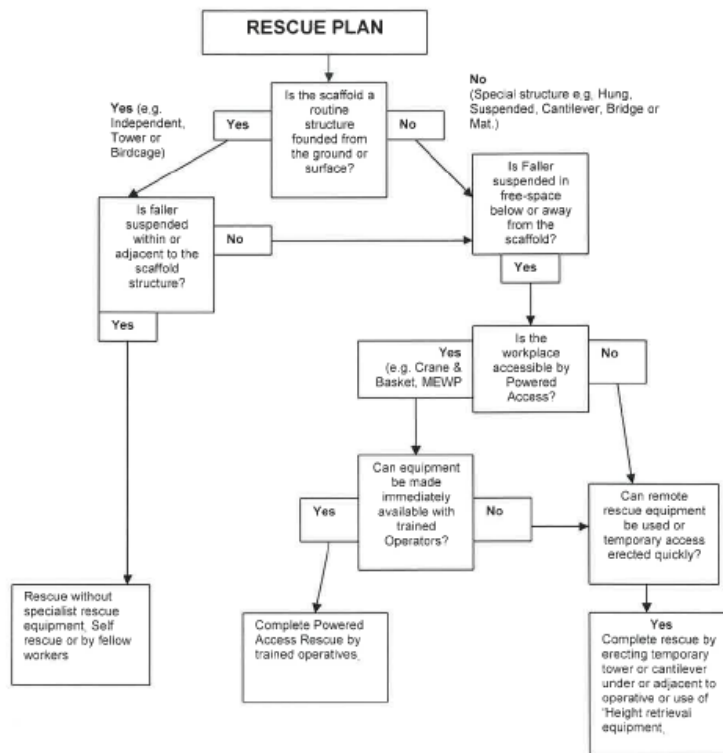
**D. Emergency rescue arrangements (refer to SG19 for full details)**

1. The first priority will be to recover the suspended scaffolder from suspension as quickly as possible without endangering the rescuer(s). The emergency services must be notified of the situation as soon as practicable.

2. If the suspended scaffolder is conscious, can he recover himself or assist in his own rescue by climbing back onto a platform, or by supporting themselves off any part of the structure.
3. If the scaffolder cannot support himself or get back onto the structure the other scaffolders or contractors must erect a platform (working platform 4 boards wide) beneath or adjacent to him as quickly as possible.
4. Once the scaffolder is on a safe working platform the fall arrest equipment must be released to allow blood circulation back into the lower limbs.
5. If the emergency services are required the scaffolders should assist where they can by providing safe access to the casualty; e.g. positioning a ladder, installing temp guardrail, securing the platform etc..

All scaffolders have been issued & trained to work to SG19:10 Guide to formulating a rescue plan.

Please see rescue plan diagram below



**E. Regulations applicable to this project**

- Working at Height Regulations 2005
- Construction Design and Management 2007
- Health & Safety (First Aid) 1981
- Personal Protective Equipment Regs. 1992
- Manual Handling Regulations 1992
- Management of Health & Safety at Work Regs 1999
- Workplace Health, Safety and Welfare 1992
- Provision & Use of Work Equipment Regulations 1992



## **F. Equipment**

Tube BS1139

5 Board Transom units BS5973

Boards BS2482

Fittings BS1139

## **G. Hygiene requirements**

Midas construction to provide share welfare facilities, location of which will be indicated during site induction. Brunel operatives would prefer to use their own vehicles for canteen purposes. Management recommends operatives not using vehicle for canteen purposes. However if the vehicle is used operatives must wash hand with hot water and soap provided site welfare facilities before and after consumption of food. Lorry cabs must be kept in clean and hygienic condition.

## **H. P.P.E**

All Brunel operatives to be provided with the following: Hi-viz jackets, gloves, steel toe capped boots, full body harnesses, safety glasses and hard hats as soon as on site and out of vehicle.

## **I. Inspection, monitoring procedures**

Scaffold: Hand over certificates & Scaff Tags to be issued upon completion of each elevation. Scaffold to be inspected by Brunel Scaffolding Ltd supervisor every seven days or after inclement weather and will be recorded in Midas construction on site register. Tool box talks will be conducted monthly with the working scaffold gang on site or in the yard before/after works. Please

## **J. COSHH**

Please find attached COSHH sheets for motor oil, WD40, diesel & petrol.

## **PERSONNEL AND CONTACT NUMBERS – Brunel Scaffolding - Swindon**

**5 James Watt Close**

**Hawksworth**

**Swindon**

**Wiltshire**

**SN2 1EL**

**TEL: 01793 531 539**

**MOB: 07545 234 345 (Andrew Crouch)**

Branch Manager: Bernard Beale

Contacts Manager: Andrew Crouch

Site Charge hand: TBA

Visiting Supervisor: Andrew Crouch

Safety Advisor: Bernard Beale

Method Statement for Midas Construction Project: Tidworth Primary School  
Quote No: 18501  
Created by: A.Crouch 25/2/14



**Issued to site foreman:**

NAME(S):

DATE:

The above have been made aware of the attached RAMS, if we are unable to carry out the control measures or follow the method statement we agree that we must stop work and inform our supervisor/manager.

